



# OMEEO REGION NEWS SHEET

SUPPORTED BY



Wednesday 11 September

AN OMEOSHIRE LIONS CLUB PROJECT

20 Cents

SERVING ENSAY, SWIFTS CREEK, OMEEO. BENAMBRA, DINNER PLAIN.

### NEWSHEET ENQUIRIES:

Email: [newsheet@omeeo.org.au](mailto:newsheet@omeeo.org.au)  
Phone : 5159 1515 ..... [www.omeeo.org.au](http://www.omeeo.org.au)  
Post: P.O. Box 182 Omeo 3898

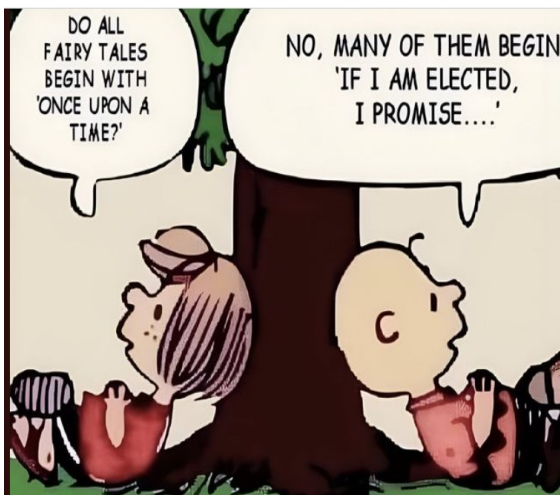
### Medical Services-Omeo Region

For **URGENT** Medical Care call **000**  
Omeo Medical Centre  
Please Phone: **51 590 140**  
To arrange an appointment  
**Monday to Friday 8.00am—5.00pm**  
**Pathology:** Collection Monday to Friday  
8.00 am—9.00am  
by appointment only  
\*\*\*\*\*

### OMEEO COMMUNITY HUB

No 26 ... Missy Morgan  
No 41 ... Leonie & Pat

### SNAPDRAGONS JOKE



### WEATHER

|             |             |             |             |             |             |             |             |
|-------------|-------------|-------------|-------------|-------------|-------------|-------------|-------------|
| Wed<br>9-11 | Thu<br>9-12 | Fri<br>9-13 | Sat<br>9-14 | Sun<br>9-15 | Mon<br>9-16 | Tue<br>9-17 | Wed<br>9-18 |
|             |             |             |             |             |             |             |             |
| 19°<br>9°   | 14°<br>6°   | 17°<br>5°   | 12°<br>5°   | 7°<br>6°    | 15°<br>5°   | 14°<br>7°   | 14°<br>8°   |

## District Diary

### Wednesday 11th September

Omeo to Bright Bus..departs Omeo 8.00am return 3.20pm  
Lego Club Omeo Library.....3.30pm-4.30pm

### Thursday 12th September

Omeo Opportunity Shop Open.....11.00am-3.00pm

### Friday 13th September

Omeo to Bright Bus...departs Omeo 8.00am return3.20pm

### Saturday 14th September

AA. meeting 1<sup>st</sup> Saturday of month, CFA rooms .....2.00pm  
Omeo Opportunity Shop Open.....11.00am-3.00pm

### Sunday 15th September

Anglican Church .....No Service...  
**Sunday 22nd** Parish Service at Omeo ..10.30am AGM 11.30  
Catholic Prayer Meeting Omeo.....9.00am  
Winter Golf Comp .....12.00pm

### Monday 16th September

Omeo to Bright Bus depart....Omeo 8.00am return3.20pm  
The High Country Singers Omeo Shire Offices.....2-3.30 pm

### Tuesday 17th September

Listen with Lorna live radio O.S.C.A.R. fm ...12.00-2.00pm

**NB.** It's ok to rest during the storms of life,  
you'll fly again when it's over.

Amicus.



**Omeo Medical Centre**  
**Charles Luiz & Howard Goldberg**  
Please note some days are via telehealth  
Phone:5159 0140





## Darren Chester

Federal Member for Gippsland

### Shopping Locally

Creates Local Jobs

#lovegippsland



1300 131 785

[www.darrenchester.com](http://www.darrenchester.com)



**OMEOPHARMACY**  
SPEAK TO YOUR LOCAL PHARMACIST

**"SPEAK TO YOUR  
LOCAL PHARMACIST"**

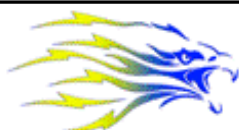
186 Day Avenue. Omeo. 3898

PH: 03 51591663 FAX: 03 5159 1686

AFTER HOURS: 0474 017 705

EMAIL: [omeopharmacy@gmail.com](mailto:omeopharmacy@gmail.com)

DELIVERY AVAILABLE



R.E.C. 17886

## MITCHELL Electrical Services

**INDUSTRIAL — DOMESTIC  
ELECTRICAL MOTOR REPAIRS**

CONTACT: TOM MITCHELL

5157 3200 — 0428 573 205

*"From The Lakes To The Alps"*

### Skicom Mt Hotham

CARPET/UPHOLSTERY/MATTRESS CLEANING SERVICE

Scott DeVries

0429 723 274

[scottdevries2@icloud.com](mailto:scottdevries2@icloud.com)



STUBBORN DIRT, GRIT, STAINS, PET ODOUR, ALLERGENS... BE GONE!

## GARY'S TREE LOPPING

- Tree Lopping
- Stump Grinding
- Hedge Trimming



PH 0427 772 364

[garysmaintenance@gmail.com](mailto:garysmaintenance@gmail.com)



### NOTICE OF AGM

Omeo Golf Club will hold their  
AGM earlier than previously.

Wednesday 9th October

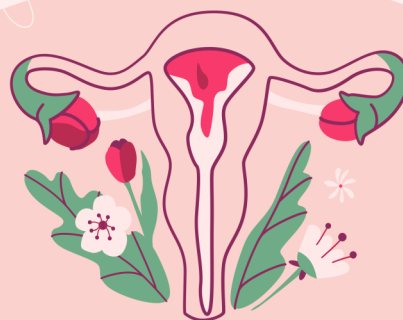
Following twilight golf, 7pm.

See you there!

## WOMEN'S HEALTH NIGHT

**"SCREENING DOWN UNDER"**

19th September @ 6pm



Let's talk about Cervical Screening,  
Breast Screening & Bowel Screening

@ Swifts Creek Bush Nursing Centre

RSVP please call 5150 2430

Childcare, Food & Beverages provided



OMEO • BAIRNSDALE • MALLACOOTA • MELBOURNE

**Daily Services between  
Melbourne - Bairnsdale - Omeo**  
**Bairnsdale Depot** - Grinters Transport,  
16 Lawless Street, Bairnsdale, 3875

**Melbourne Depot** - Vic Freight Specialists, 13B,  
13-17 Progress Street, Dandenong, 3175

**Omeo Depot** – Omeo Welding & Engineering &  
Equipment Hire, 87 Bilton Street, Omeo, 3898  
Phone: (03) 5152 5778 Fax: (03) 5152 3329

Mobile: 0418 516 857 Email:

admin@grinters.com.au

Pallets . Parcels .

- ◆ Livestock . Hay .
- ◆ Machinery . Bulk
- ◆ General . Wool
- ◆ Refrigerated Freight . Farm Equipment

**Leaves 9.30am from Bairnsdale to Omeo**



### *Jens and Maureen Hudson*

18 Great Alpine Road Lucknow 3875

Phone : Maureen 0402 001 593

Jens 0402 006 268

Many fabrics to choose from for all your  
furnishing needs Over thirty years in  
Business and 76 years' experience in the  
industry, between us we can help you.

Including car and motorbike seats

- Car roof linings replaced
- Cushions made to size
- Foam cut to size
- Toyota Land Cruiser seat foams



- Groceries
- Meat
- Fruit & Veg
- Gas Bottles
- Bottle Shop
- Post Office

➤ Fuel ULP & DSL + Winter Mix

➤ Breakfast & Lunch Daily until 2pm

➤ Fish & Chips - Friday Nights 4pm-7pm

➤ Eat In or Take Away

➤ Personalised Weekly Orders of Meat, Fruit &  
Vegetables

Drop in and meet our awesome team to grab a  
bite to eat or stock up on supplies for your  
adventure around Sunny Benambra

#### TRADING HOURS

Weekdays 8am - 5:30pm

Weekends 9am - 5pm

Public Holidays 9am - 5pm

**03 5159 9209**



Bore pumps Sales and servicing,  
Mains and solar operated

TV Installation and servicing of both  
Satellite & "Terry"

Generator - Sales/Hire/Installation/

Mains to Generator  
changeover switches and inlets

Electrical Appliance Repairs/Maintenance

Electrical Installations  
Industrial to domestic..

Competitive rates  
and servicing the Omeo region

**Contact Jeremiah on 0418 909 978**

**Switch all  
paper  
products in  
your life to  
100% recycled**



**Did You Know?**

Toilet paper, printing paper and almost all other paper products are available as recycled options.

For more information contact Council or visit our A – Z - Where to next? on our website.



**EAST GIPPSLAND  
SHIRE LIBRARIES**



# LEGO Club 2024



**Junior LEGO enthusiasts are invited to attend our after- LEGO Club school sessions.**

The sessions incorporate freestyle activity and themed construction activities.

**Donations Welcome**

The library will gladly accept donations of old or new LEGO brand pieces for our LEGO Club collection.

For more information, phone **51524225** or ask in person at the library about these **FREE** sessions.

**Omeo Service Centre**

3.30pm-4.30pm

Every Wednesday

*Except School Holidays*



**All Children must be accompanied by an adult**

**ALL SCREENS GIPPSLAND**  
SALES - SERVICE - REPAIRS

**GLASS & GLAZING –  
WINDOW REPLACEMENTS**

– SHOWER SCREENS – ROBE DOORS –  
SECURITY DOORS – FLY SCREENS &  
MORE

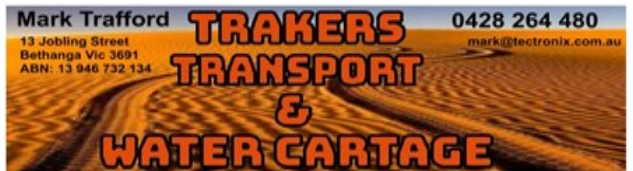
Servicing - Ensay, Swift Creek, Omeo,  
Benambra & Dinner Plain

**OFFICE: 51526791**

JUSTIN: 0457775168

emailsales@allscreensgippsland.com.au

[www.allscreensgippsland.com.au](http://www.allscreensgippsland.com.au)



**Specialising in the following services**  
Potable Water Cartage

Transport of general freight, Agricultural goods,  
Motorbikes, Quad bikes, Mowers  
Small tractors, SXS's, Machinery parts,  
Bagged grain and much more.

**Reasonable rates**

Truck equipped with 1,000 KG. tailgate loader  
Full tarpaulin if required,  
ability to load and unload goods  
with 1.6 tonne all terrain pallet jack.  
Truck capabilities: 6.tonne, 4x4  
Tray size: 5.5 mtrs x 2.4 mtrs.  
Flat top trailer 6.3 mtr x 2.5 mtr

Transporting weekly to Omeo and district  
from Albury/Wodonga Corryong  
Orders phoned or emailed by Tuesday  
11 am For delivery on Wednesdays

Contact Mark for delivery charges on  
**0428 264 480**

Mark @tectronix.com.au



## Golf Club Results Sunday 8/9/2024



**18-hole stableford**

**Open to all members & casuals**

**12.30pm for 1pm hit off.....same next week 15/9/2024**

| <u>Place</u>  | <u>Points</u> | <u>Player Name</u> |
|---|---------------|--------------------|
| Winner  | 33            | John Reid          |
| NAAGA   | 22            | Dean Jobling       |
| Nearest to Pin 7th                                  |               | John Reid          |
| Nearest to Pin 2 <sup>nd</sup> shot 6 <sup>th</sup> |               | Pat McCormack      |



### Professional Cleaning Services East Gippsland

Let us do the cleaning so you can do the living!



#### Cleaning Services

Houses  
Commercial  
End of lease  
Air BNB  
Offices

#### Areas

Benambra, Omeo  
Swifts Creek, Mt  
Hotham, Dinner  
Plain and  
Surrounding areas.

#### Prices

All places are  
quoted for free, or  
we can negotiate a  
competitive hourly  
rate.

Professional cleaning service in the area.

Contact Maïke Cruze | 0474 552 617 | eastgippslandcleaning@gmail.com |

# NEW RUSH BREWHOUSE

## Opening Hours

Friday from 5pm

Sunday Breakfast 8am 12pm

Sunday Lunch 12- 2pm



## **SUBSCRIBERS PLEASE NOTE**

www.omeo.org.au/newssheet

Phone : 5159 1515

**All articles for the newssheet to be in  
by 12.00 noon on the  
Monday before publication.  
(Wednesday)**

Prices for Newssheet Ads are as follows

Full Page A4 \$40

1/2 Page.\$20.00

1/4 Page.\$10.00

1/8 Page.\$ 5.00

Please state what size you require &  
**How Long /Dates you would like it  
advertised for.**

**Thank You**

**PH : 5159 1515**



## School for Student Leadership

### **The Alpine School Dinner Plain Campus Catering Assistant**

Ongoing Position

Start date 7/10/2024

Reference No. 1434418

Please apply through

**DET**

Recruitment Online website

[www.education.vic.gov.au/schooljobs](http://www.education.vic.gov.au/schooljobs)

or phone

03 5150 8100

Applications close

19/09/2024

## **Hay for Sale**

Round bales  
Second Cut Lucerne

\$150 +GST

Stephen Richardson

Swifts Creek

Phone 0407 803 830



### **PAYNES HUT ACCOMODATION**

*SITUATED ONE HOUR N/W OF OMEO  
OPENING FOR THE SEASON*

***FROM 1st OCTOBER 2024***



*Enjoy some one cooking for you, or cook  
for yourselves in our outdoor kitchen.*

*visit the website*

*payneshut@skymesh.com.au or phone*

***0351597255***



**PHYSIOTHERAPIST**

**Robert Hughes is a qualified and extremely experienced Physiotherapist from McMillan Chiropractic**

**Robert will be available at Swifts Creek Bush Nursing Centre Wednesday, 18th September, 16<sup>th</sup> October, 13th November 2024**

**FOR APPOINTMENTS Please phone 5150 2430 NO GP Referral required.**



**SWIFTS CREEK BUSH NURSING CENTRE**

T. 03 5150 2430 F. 03 5150 2439  
Email. [susan.carroll@gha.net.au](mailto:susan.carroll@gha.net.au)

17 McMillan Street, Swifts Creek 3896  
Open 9am until 5pm Monday to Friday  
9am until 11am Weekends

Emergency on-call available after hours  
Nursing services: No appointment required.

You are required to pay an annual membership fee or otherwise a non-member fee.

A Rural and Isolated Practice Nurse is available for wound infections.

Assistance with Virtual Emergency consults.

Pathology: Every Weekday, 9am until 9.45am

Women's Health

Ante/Postnatal Care

Suturing

Memberships

Family \$140, Single \$70 due 31<sup>st</sup> July each year

Hire of Equipment

Home visits if required.

24hr Bp monitor

Immunisations

Webpage – [https://](https://www.swiftscreekbushnursingcentre.com.au)

[www.swiftscreekbushnursingcentre.com.au](https://www.swiftscreekbushnursingcentre.com.au)



**Ensay Bush Nursing Centre**

T. 03 51502416 F. 03 51502419 email: [ensaybnc@gha.net.au](mailto:ensaybnc@gha.net.au)

Open 9am until 3pm Monday to Friday

or 8.30am-9am and 3-3.30pm emergencies only

Nursing services: No cost No appointment required.

Pathology Monday to Friday 9 am until 10.30 am- No cost. No appointment required

Footcare: Approximately 6 weekly, \$15.00 cost ring for an appointment

Walk and morning tea: 1<sup>st</sup> Friday of each month may include some craft activities, no cost only delicious homemade cakes etc.

RFDS mental wellbeing: Fortnightly face to face and telehealth model.

Memberships: \$50.00 family and \$25.00 single due 31<sup>st</sup> of July each year, pro-rata payments accepted for new members.

AGM: Occurs on the second Monday of October all welcome, new members to the COM welcome.

Follow us on facebook and our webpage for events and employment opportunities.

WEBPAGE

<https://www.ensaybushnursing.com.au>



**5 Great Alpine Road  
Ensay, VIC. 3895**

Benambra CWA Presents



## SPRING FAIR

Date: 6th October Time: 11am till 2pm

Come to 'Dejalis' Benambra park for a Spring Fair with games, Apple bobbing, Donuts on a string, face painting and more.

All activities covered with a Gold coin donation.

CWA providing BBQ lunch, Cake Stall, Fairy Floss and Popcorn at a small cost.

**CASH ONLY EVENT.**



## REQUEST FOR TENDER

The following Tender closes at  
**12.00pm on Wednesday 18  
September 2024:**

**CON2025 1706**

### **Provision of Electrical Services**

Tender documentation is available at  
[tenderlink.com/egipps](https://tenderlink.com/egipps)

Invitees must submit their Tender  
electronically via TenderLink

For enquiries phone East Gippsland  
Shire Council on

**03 5153 9500**



## SWIFTS CREEK BUSH NURSING CENTRE INC.

ABN: 78 513 040 891

INCORPORATION No A0011271F

### **ANNUAL GENERAL MEETING**

**When:** Wednesday 9th October 2024 @ 5.30pm

**Where:** Interested parties may participate in the AGM in person at the Swifts Creek Bush Nurse Centre or Via video

conference on Zoom. If you require the Zoom link please contact the centre.

#### Committee members for renomination

Pauline Canfield -renominating

Michael Cawley –renominating

#### Committee member vacancies:

No vacancies at this time

RSVP please Contact: Bush Nursing Centre: 03 5159 4210 or the  
SCBNC email: [Secretary.scbnc@gmail.com](mailto:Secretary.scbnc@gmail.com) for access to the Zoom link.





## TINY TOWN APPLICATION

## Omeo community groups

For interested Omeo community groups looking towards a Tiny Town grant application in this coming round, you are invited to attend a meeting at the Omeo Community Hub on

**September 19<sup>th</sup> at 6pm** to discuss a town submission. As you will be aware the process for this round has changed from that of the previous round.

Come along with your ideas. A second meeting for the development of a town agreed application will be held on **September 26<sup>th</sup>**. Representation of your committee is required to be a part of the application. A co-contribution is also required – refer to the Tiny Towns guidelines. Applicants other than local government and Alpine Resorts - 20% of the total proposed project budget must be co-contributions (can include 50% in-kind). If the decision comes to a vote then there will be one vote per community group represented at the second meeting.

**You are not obligated to be a part of this process and apply as a stand alone but the information provided by RDV is that collaborative applications will be deemed more favourably.**

*Applicants may apply for a minimum grant of \$5,000 and a maximum grant of \$50,000 (not including GST). Every project requires its own application. A maximum amount of \$50,000 per town will be applied for Round 2 to enable an equitable and broad geographic spread of funding.*

*Where there are multiple applicants with projects from the same town, these applicants are encouraged to work together, including with local government, to put forward high-quality applications for agreed projects that strongly align with the program guidelines.*

*This could be one agreed project or multiple projects that combined do not exceed \$50,000*



**TRIVIA & PIZZA NIGHT**  
SATURDAY OCT 5



**TAMBO VALLEY GOLF CLUB**  
proudly supporting the **Swifts Creek Bush Nursing Centre**

Invites you to join them for a  
**Not so serious – But Serious Enough!**  
**TRIVIA & PIZZA NIGHT**  
JUNCTION HOTEL, SWIFTS CREEK  
Saturday 05 October, commencing 7.00p.m.  
\$25.00 per head

Light Meal: Pizza and Shared platter included.  
Teams of 6 – or join a team on the night.

Major Raffle: 2 Nights Accommodation Lakes Entrance

**Get ready for a night of laughter, prizes and fun. A great night for a great cause.**

**Bookings Essential** please contact Bill or Lynne Cooper  
Email: [secretary@tambovalleygc.com](mailto:secretary@tambovalleygc.com) or Phone 0409 994 311 or 0458 994 311



Funds have been made available by East Gippsland Shire Council and Gippsland Community Foundation with funds from the Victorian Government through Emergency Recovery Victoria and Commonwealth Government under the Commonwealth 2020-2024 Category C Disaster Recovery Funding Arrangements in response to the 2020-2021 Eastern Victorian Bushfires.



**WINE TASTING**

Fresh air Cafe  
hosting a wine tasting night

Friday 27th of September 2024 6pm.

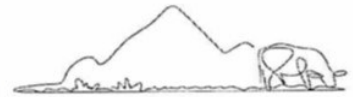
Cheese plater for two with  
sparkling red taster on arrival.

Tasting starts at 6:30 pm featuring  
Michellini + Gapsted wines from the  
Buckland Valley just over the hill.

All wines will be pared with finger  
foods to enhance your tasting  
experience.

\$65 per head  
limited seating, so get in early to  
avoid disappointment  
call 51591683

# PEAK PASTURE & LIVESTOCK



INVITE YOU TO ATTEND AN INFORMATIVE WORKSHOP EXPLORING STRATEGIES TO OPTIMISE LIVESTOCK PRODUCTION AND PROFIT

## GUEST SPEAKERS PRESENTING

### GUEST SPEAKERS PRESENTING



#### Dr Matt Ball

*Large Animal Technical Veterinarian*

Virbac Animal Health

Dr Matt Ball has 25 years experience helping producers in a range of clinical, advisory and research roles. He has worked in clinical practice, government and industry. He has undertaken postgraduate studies in disease surveillance, education and veterinary pharmacology. Matt is passionate about helping farmers develop practical and profitable preventative health programs.

Matt will be discussing impactful strategies to manage fluke and worm control



#### Dave Huggins

*Independent Ruminant Nutritionist*

HUGGINS NUTRITIONAL SERVICES

David provides nutritional advice with a strong focus on animal health, ration formulation, pasture management, biological farming practices and feed budgeting.

David will discuss nutritional requirements of various classes of livestock and further explore some key factors for success in early weaning programs.

We will explore requirements for the upcoming season, before opening to discussion which farmers wish to explore.



#### Brent Burgess

*Territory Manager*

Elanco Animal Health

Brent had a background in applied meat science, prior to joining Elanco as the Tasmanian/Victorian Territory Manager.

With Dr. Craig Stevenson's support, Brent will be presenting an analysis of localised blood selenium data sets. We will discuss the impacts of clinical and sub clinical selenium deficiency and simple strategies to mitigate production loss.



Wednesday 18th September 2024



9.30am - 3.30pm



Omeo Recreation Reserve



Morning tea, lunch and refreshments provided



Please RSVP by 11th September and advise of any dietary requirements



Sam 0418 314 752

Interactive Workshops  
Networking Lunch  
Bring your questions

We look forward to hosting you

GROW WITH US



samantha@peakpastureandlivestock.au





Country Women's Association of Victoria Inc.  
High Country Branch

# 2025 Scholarship

**The branch is proud to announce the High Country Branch \$3000 Scholarship to assist with ongoing education.**


Eligible applicants will be year 10 and above school leavers from the local community.

You can request further information and an application form by contacting:

Rev. Marian Bisset  
0421 067 212

or by contacting the branch through social media.

Applications due: 21st October, 2024

 [cwahighcountry](#)



# Interested in learning to play *golf*?

All welcome to join in the fun of learning the basics of this great game at the

**TAMBO VALLEY GOLF CLUB,**  
203 Nunning Road, Tongio  
**SUNDAY, 06 OCTOBER 2024.**



**MATT PORTELLI**  
GOLF COACHING

Matt will provide two great clinics, together with the opportunity to enjoy a private golf lesson by appointment should you choose.

#### **JUNIOR COACHING CLINIC - COMMENCES 9.00A.M.**

This Session is designed for children between the age of 7 and 18 years

- \$5.00 per person participation fee for insurance purposes applies \*payable on the day
- All children will receive free junior membership to the Club (no green fees apply)
- All equipment provided on the day, children with their own clubs may bring them.

#### **ADULT COACHING CLINIC - COMMENCES 10.30A.M.**

- \$5.00 per person participation fee for insurance purposes \*payable on the day
- All equipment provided on the day, participants with their own clubs may bring them.

#### **FREE FUN 9 HOLE round of golf following the clinics!**

The NEXT CLINIC will be held on Sunday, 24 November, 2024 – Further Details to follow.

**Bookings Essential.** Please register your interest via email or phone the Club Secretary, Bill Cooper.  
Email: [secretary@tambovalleygc.com](mailto:secretary@tambovalleygc.com)  
or Phone 0409 994 311 or 0458 994 311



GIPPSLAND  
Community  
Foundation

Funds have been made available by **East Gippsland Shire Council** and **Gippsland Community Foundation** with funds from the Victorian Government through **Emergency Recovery Victoria** and **Commonwealth Government**, under the Commonwealth-State Category C Disaster Recovery Funding Arrangements, in response to the 2019-20 Eastern Victorian Bushfires.





*The Omeo & District Agricultural & Pastoral Society Inc.*

*Invites you to attend*

# Floral Art & Cookery Workshops

All welcome to this fun and free event

Find out what the judges are looking for! Learn and share some tips and tricks on how to present the best bunch!

Learn from respected judges and Show enthusiasts, Judi Sykes, Anne-Marie Primmer and Maree Campbell. Bring a jam, cookery item or two and some foliage for discussion, feedback and fun.



Floral Art Workshop  
**Wednesday 23<sup>rd</sup> October**

12:00pm – 4:30pm

&

Cookery, Preserves & Jams Workshop

**Saturday 26<sup>th</sup> October**

12:00pm – 4:30pm



**Free Lunch Included. Register before 21 October.**

To be held at the Omeo Recreation Reserve

Hosted by the Omeo & District Agricultural & Pastoral Society

Supported by the Foundation for Rural & Regional Renewal/FRRR & the High Country Garden Club

For more information contact Lisa Lee Secretary E: [omeoshowsec@gmail.com](mailto:omeoshowsec@gmail.com) P: 0499 192

722 [www.omeoshow.com.au](http://www.omeoshow.com.au) Facebook: Omeo Show 2024



Supported by FRRR



# LET'S CELEBRATE!!!

## SWIFTS CREEK HALL

### UPGRADE

SATURDAY  
21ST  
SEPTEMBER  
2024

- ✓ 5.00pm – 6.30pm  
Free BBQ with the Swifts Creek Football Netball Club
- ✓ 7.00pm – til late  
Free concert with **MOLLIMOR**, Celtic music band
- ✓ BYO
- ✓ No bookings required
- ✓ Next Project a new roof !! Donations warmly received.

This project is jointly funded by the Victorian Government and Commonwealth Government under the Commonwealth-State Disaster Recovery Funding Arrangements



# BENAMBRA ANGLING CLUB INC.

Registered No. A00032970

## 2024 / 2025 Competition Dates

### Weigh in 5-6pm

Saturday 7 September 2024 at 5.00pm

Dr. Mitchell Shield Saturday 11th & Sunday 12th October 2024

Hosted by Benambra Angling Club

Weigh-in at 12.00noon at the Benambra Hotel – No Comp

Saturday 26 October 2024 at 5.00pm

Saturday 9 November 2024 at 5.00pm

Saturday 30 November 2024 at 5.00pm

Saturday 14 December 2024 - Time TBC - Christmas Party

Saturday 25 January 2025 at 5.00pm

Saturday 15 February 2025 at 5.00pm

Sunday 9 March 2025 at 5.00pm

Saturday 26 April 2025 - Presentation Night Details TBA

We encourage the use of catch and release. All photo's must show the scale measurement and the whole fish. 10% is deducted from the weight. If the fish is in a net a separate photo must be taken showing the weight of the net. Show to John at weigh-in. **30cm min. trout length.**

Anyone who is NOT a member by opening day must be a financial member at least one week prior to weighing in a fish.

All fish weighed in must be gutted (can leave gills in), with the exception being Carp and Greasies. Maximum bag of 2. Macquarie Perch 35cm maximum 1 only. State Ruling. Fishing boundaries, Victorian Waters only. Strictly bank fishing only.

Weigh in times should be strictly adhered to.

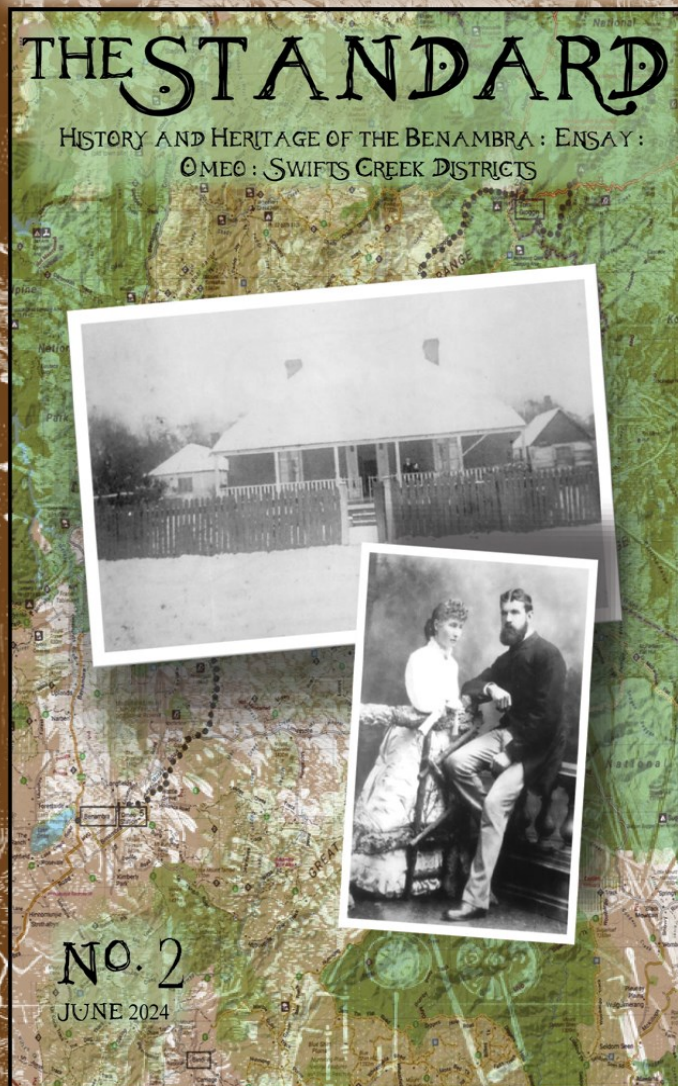
Post: C/- Benambra Post Office, Benambra VIC 3900

Email: [benambraangling@gmail.com](mailto:benambraangling@gmail.com)

President: Jamie Fitzgerald - Secretary: Sharon Cook

# THE STANDARD

HISTORY AND HERITAGE OF THE BENAMBRA : ENSAY :  
OMEIO : SWIFTS CREEK DISTRICTS



OMEIO HISTORICAL SOCIETY  
Our quarterly magazine is  
available in printed form at:

\*Swifts Creek Bakery

\*Fresh Air Cafe, Omeo

\*Benambra General Store

\$8 per copy. Issue 3 out soon.

For an electronic copy,  
contact [omeohs@gmail.com](mailto:omeohs@gmail.com)  
and take a subscription.  
\$20 for the year (4 copies)

